

# D'BAYU RESIDEN

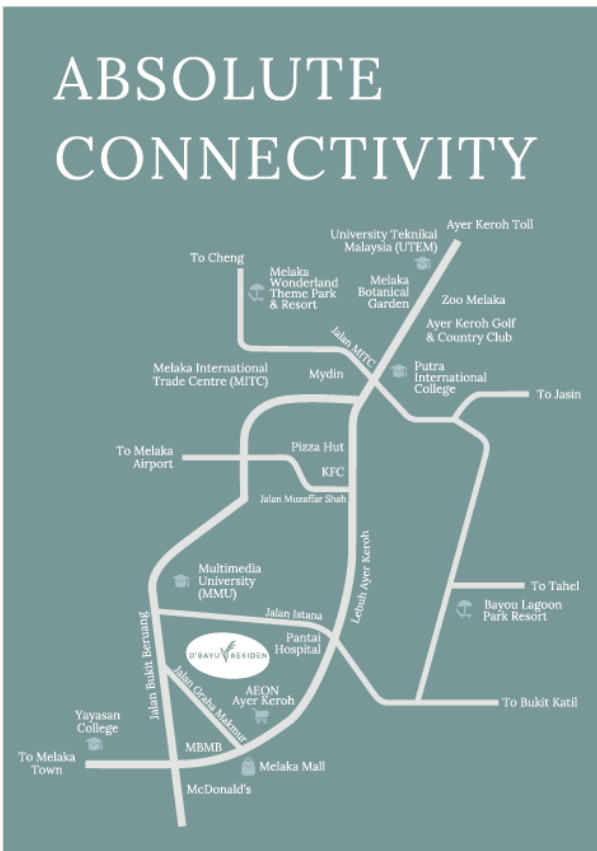
— Ayer Keroh, Melaka —



## PEACE & LOW DENSITY URBAN LIVING



## ABSOLUTE CONNECTIVITY



**Strategic Location**



**No Obstruction Panoramic View**



**RFID Access System**



**Two Carparks**



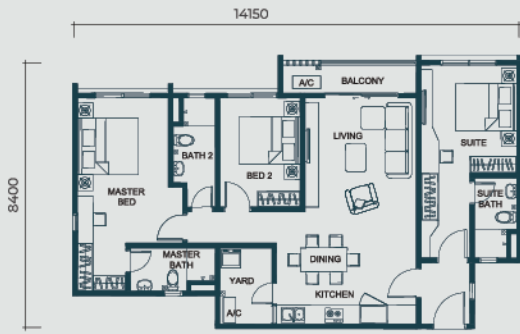
**Gated Guarded 3-Tier Security**



**24-Hour CCTV Surveillance**

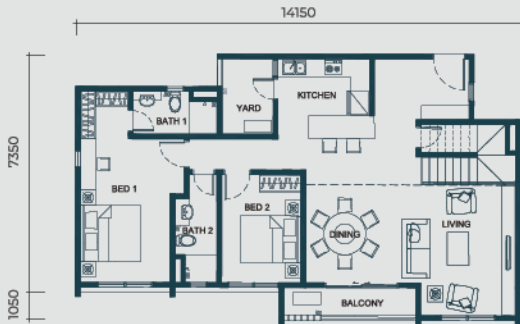
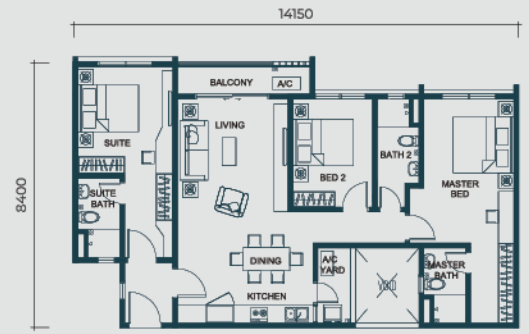
Lap Pool • Play Pool • Wading Pool • Gymnasium Deck • Jacuzzi • Gazebo • BBQ Area • Lounge Area  
 Playground • Multipurpose Hall • Reading Room • Games Room • Surau • Kindergarten • Sauna/Steam Room

# FLOOR PLANS

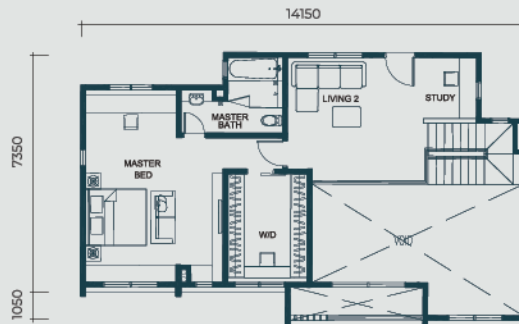


**TYPE A (DUAL-KEY)**  
3 Rooms 3 Bathrooms  
Built-up 1,120 sq. ft.

**TYPE B (DUAL-KEY)**  
3 Rooms 3 Bathrooms  
Built-up 1,110 sq. ft.



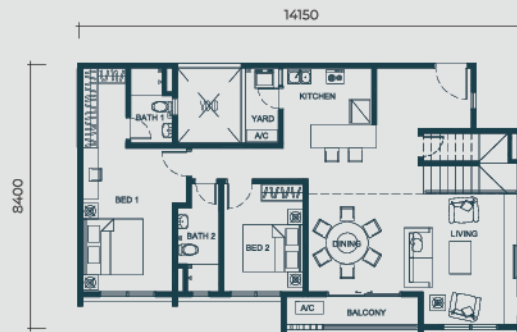
Lower Floor (1,120 sq. ft.)



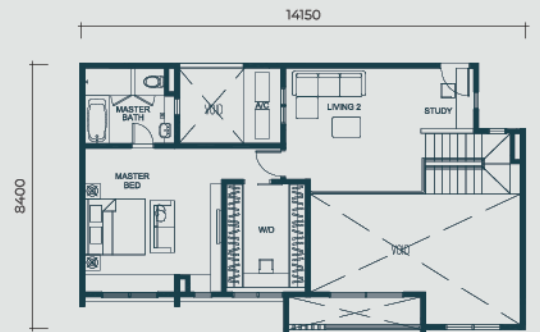
Upper Floor (722 sq. ft.)

**TYPE A1 (DUPLEX)**  
3 Rooms 3 Bathrooms  
Built-up 1,842 sq. ft.

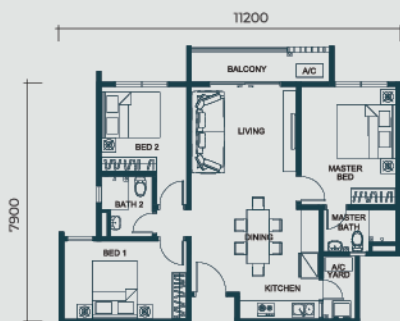
**TYPE B1 (DUPLEX)**  
3 Rooms 3 Bathrooms  
Built-up 1,822 sq. ft.



Lower Floor (1,110 sq. ft.)

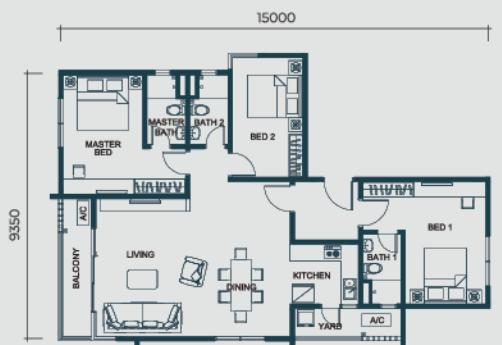


Upper Floor (712 sq. ft.)



**TYPE C**  
3 Rooms 2 Bathrooms  
Built-up 909 sq. ft.

**TYPE D (DUAL-KEY)**  
3 Rooms 3 Bathrooms  
Built-up 1,230 sq. ft.



MaMing Development (Ayer Keroh) Sdn Bhd 202001032468 (1388788-A)

18-07, Level 18, PJX Tower, No. 16A, Persiaran Barat, 46050 Petaling Jaya, Selangor

603-7931 1888 | enquiry.maming@gmail.com | www.maming.com.my | mamingholdings

Disclaimer: The information contained herein is subject to changes and cannot form part of an offer or contract. All renderings are artist's impression only. All measurements are approximate. While every reasonable care has been taken in preparing this brochure, the developer or any associated parties cannot be held responsible for any inaccuracy. All info are subject to variations, modifications and substitutions as may be required.

For more information, please contact :